



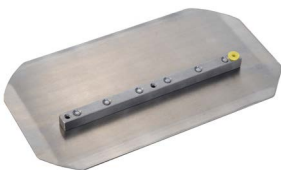
Building on quality

Power Trowel Blades

Top specification Trowel Blades for high performance power trowels. Low bounce, tempered steel edges detailed for the smoothest finishing.



- Standard fitting to suit most makes of power trowel.
- Tempered steel to give maximum blade life and a stiffness to reduce bounce.
- Quality rivets keep the spines tight.



Combination Blades

Choose the edge to float or finish



Finish Blades

Two edges for max. life



Float Pans / Float Discs

Fit under finish blades

	Blades per set	Length inch / mm	Width inch / mm	Steel Thickness mm	Weight Kg	Order Code
Float Pan / Disc for 24" 600mm trowels	1					94372
Float Pan / Disc for 36" 900mm trowels	1	diameter 38.4 / 975		1.9		F36P
Float Pan / Disc for 46 -48" 1150 - 1200mm trowels	1					94373
Combination Blades for 36" 900mm trowels	4	14 / 355	8 / 208	1.9	6.5	F36C
Combination Blades for 46 -48" 1150 - 1200mm trowels	4	18 / 455	8 / 208	1.9	8.4	F46C
Finish Blades for 24" 600mm trowels	4					94374
Finish Blades for 36" 900mm trowels	4	14 / 355	6 / 150	1.6	19.5	W52001
Finish Blades for 46 -48" 1150 - 1200mm trowels	4					94375